

# PHILIPS

# Model B4G37U

**General Description:** Six-valve (including rectifier), M.W./L.W./V.H.F., A.M./F.M. table receiver. For operation on A.C./D.C. mains, 200-250 volts, 50 watts (mains-connected chassis). Known also as **Model 437U**.

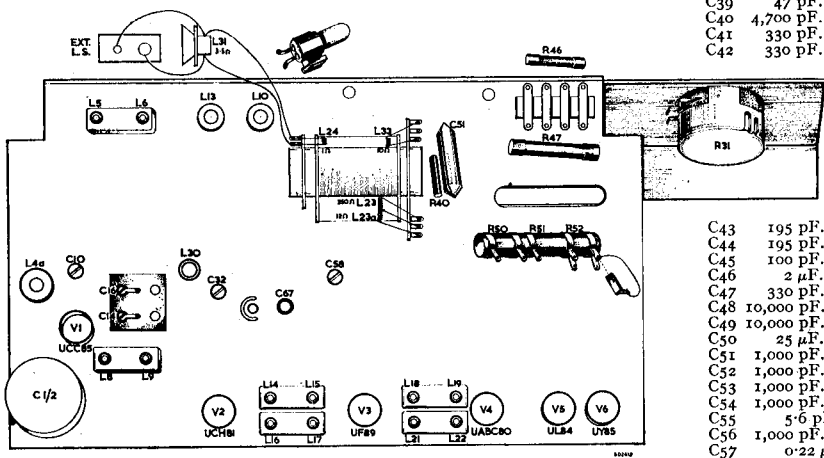
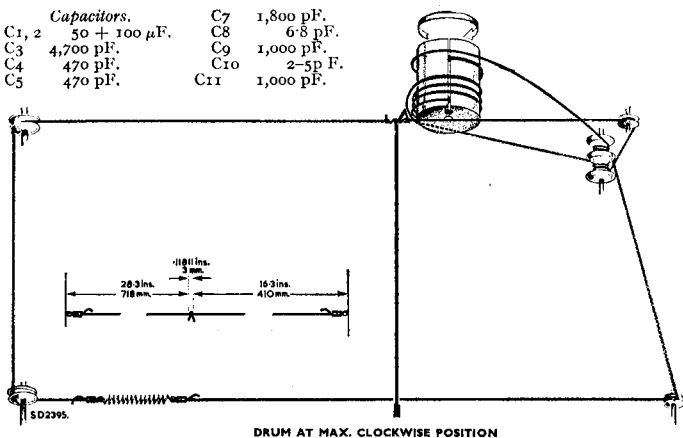
**Valves:** (V<sub>1</sub>) UCC85; (V<sub>2</sub>) UCH81; (V<sub>3</sub>) UF89; (V<sub>4</sub>) UABC80; (V<sub>5</sub>) UL84; (V<sub>6</sub>) UY85. Pilot lamp 19-volt, 0.1-amp (8097D).

**Dismantling:** Remove control knobs; then remove five chassis fixing screws from base of cabinet and withdraw chassis. To detach chassis completely from cabinet unsolder speaker leads.

**Alignment:** Tuner settings for alignment position measured from tuner bar to plate of permeability tuner assembly; 36.5 mm. 1620 kc/s.; 24 mm. 190 kc/s.; 16 mm. 87.5 Mc/s.; 35 mm. 100 Mc/s. A.M. I.F. 470 kc/s.

<i>Capacitors.</i>		C7	1,800 pF.
C1, 2	50 + 100 μF.	C8	6.8 pF.
C3	4,700 pF.	C9	1,000 pF.
C4	470 pF.	C10	2-5p.F.
C5	470 pF.	C11	1,000 pF.

C12	8.2 pF.
C13	8.2 pF.
C14	2-10 pF.
C15	130 pF.
C16	2-10 pF.
C17	15 pF.
C18	33 pF.
C19	6.8 pF.
C20	15 pF.
C21	100 pF.
C22	1,200 pF.
C23	56 pF.
C24	200 pF.
C25	120 pF.
C26	470 pF.
C27	4,700 pF.
C28	15 pF.
C29	15 pF.
C30	110 pF.
C31	195 pF.
C32	18 pF. (max.)
C33	33 pF.
C34	3,000 pF.
C35	100 pF.
C36	4,700 pF.
C37	4,700 pF.
C38	22 pF.
C39	47 pF.
C40	4,700 pF.
C41	330 pF.
C42	330 pF.



C43	195 pF.
C44	195 pF.
C45	100 pF.
C46	2 μF.
C47	330 pF.
C48	10,000 pF.
C49	10,000 pF.
C50	25 μF.
C51	1,000 pF.
C52	1,000 pF.
C53	1,000 pF.
C54	1,000 pF.
C55	5.6 pF.
C56	1,000 pF.
C57	0.22 μF.



(L22, L21, L17, L16); M.W. 1620 kc/s. (C58, C32); L.W. 190 kc/s. (C67, L30). F.M. I.F. 10.7 Mc/s. (L18, L19/L19a, L14, L15, L8, L9); R.F. 87.5 Mc/s. (L6, L5); 100 Mc/s. (C16, C10). Trim C14 for minimum oscillator voltage with detector probe for valve voltmeter connected between anode of V1a and earth of V1 valve holder. Connect valve voltmeter via 100k across C46, apply unmodulated 94 Mc/s. signal to F.M. aerial sockets and trim C4A for maximum output.

**Drive Cord:** Make up cord to dimensions shown. Turn tuner drum to maximum clockwise and insert knot on cord into slot on tuner drum, shorter end towards back. Pass short end of cord one turn clockwise around drum, winding from back to front, and down to rear pulley on drive spindle. Wind two turns from back to front in clockwise direction, then pass cord around bottom right-hand pulley. Fit tension spring to cord and anchor it to convenient point. Take longer end of cord and wind  $3\frac{1}{2}$  turns anti-clockwise around drum, winding from front to back. Pass cord around front pulley on drive spindle and wind on  $2\frac{1}{2}$  turns anti-clockwise, winding from back to front. Lead cord over top right-hand pulley, around top left-hand pulley, and attach it to tensions spring. Finally stretch cord over bottom left-hand pulley.

---